

**PLEASE CHECK WWW.MOLEX.COM FOR LATEST PART INFORMATION**

**Part Number:** [0194170119](#)  
**Status:** **Active**  
**Overview:** [mx150l sealed connector system](#)  
**Description:** MX150L™ Circuit Voiding Key

**Documents:**

[Drawing \(PDF\)](#) [RoHS Certificate of Compliance \(PDF\)](#)

**General**

Product Family	Accessories
Series	<a href="#">19417</a>
Comments	Insulation Resistance: 1000 Megohms
Component Type	Voiding Key
MolexKits	Yes
Overview	<a href="#">mx150l sealed connector system</a>
Product Literature Order No	987650-2181
Product Name	MX150L™

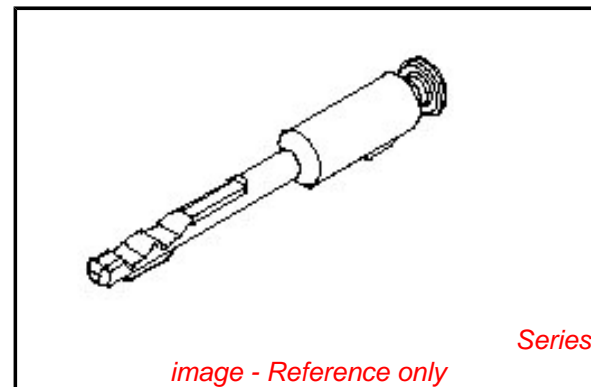
**Physical**

Circuits (Loaded)	N/A
Gender	Dual
Lock to Mating Part	None
Packaging Type	Bag
Temperature Range - Operating	-40°C to +125°C

**Material Info**

**Reference - Drawing Numbers**

Sales Drawing	SD-19417-002
---------------	--------------



**EU RoHS**

**ELV and RoHS  
Compliant**  
**REACH SVHC**  
 Not Reviewed  
**Halogen-Free  
Status**

**China RoHS**



**Not Reviewed**

**Need more information on product  
environmental compliance?**

Email [productcompliance@molex.com](mailto:productcompliance@molex.com)  
 For a multiple part number RoHS Certificate of  
 Compliance, [click here](#)

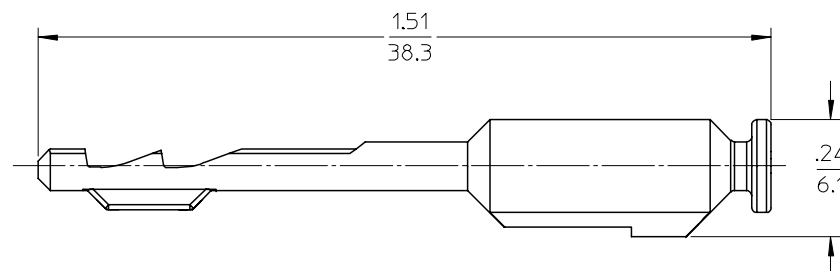
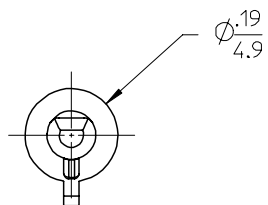
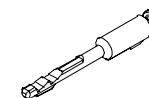
Please visit the [Contact Us](#) section for any  
 non-product compliance questions.

**Search Parts in this Series**

[19417Series](#)

**Use With**

[19418 MX150L™ Receptacle](#), [19419  
MX150L™ Plug](#), [19435 MX150L™Rear  
Mount Flange Plug](#)



NOTES:

1. MATERIAL: SINDIOTATIC POLYSTYRENE (SPS), GLASS FILLED, UL94 V-0  
COLOR: NATURAL
2. PACKAGING: PART IS PACKAGED 80 STRIPS OF 10 IN A 96707-0023 CARTON, TOTAL SPQ: 800.
3. MATES WITH: 19418 SERIES RECEPTACLE ASSEMBLIES, 19419 SERIES PLUG ASSEMBLIES, & 19435 SERIES SEALED PANEL MOUNT PLUG ASSEMBLIES.

REVISED NOTES ETC NO: ETC2006-0001 DRW: JPWLCK 2005/07/12 CHKD: JPWLCK 2005/07/14 APPR: RDEROSS 2005/07/15	DESCRIPTION A1	QUALITY SYMBOLS ▽=0 ▽=0	GENERAL TOLERANCES (UNLESS SPECIFIED) <table border="1"> <thead> <tr> <th></th> <th>mm</th> <th>INCH</th> </tr> </thead> <tbody> <tr> <td>4 PLACES</td> <td>± ---</td> <td>± ---</td> </tr> <tr> <td>3 PLACES</td> <td>± ---</td> <td>± .010</td> </tr> <tr> <td>2 PLACES</td> <td>± 0.26</td> <td>± .02</td> </tr> <tr> <td>1 PLACE</td> <td>± 0.5</td> <td>± ---</td> </tr> </tbody> </table> ANGULAR ± 3 °		mm	INCH	4 PLACES	± ---	± ---	3 PLACES	± ---	± .010	2 PLACES	± 0.26	± .02	1 PLACE	± 0.5	± ---	DIMENSION STYLE IN/MM DRAWN BY: JPWLCK DATE: 06/30/04 CHECKED BY: DATE: 06/30/04 APPROVED BY: RDEROSS DATE: 06/30/04	SCALE 4:1 DESIGN UNITS INCH	THIRD ANGLE PROJECTION
			mm	INCH																	
		4 PLACES	± ---	± ---																	
		3 PLACES	± ---	± .010																	
2 PLACES	± 0.26	± .02																			
1 PLACE	± 0.5	± ---																			
DRAFT WHERE APPLICABLE MUST REMAIN WITHIN DIMENSIONS			MATERIAL NO. 19417-0119	TITLE CIRCUIT PLUG MX150L	DOCUMENT NO. SD-19417-002	SHEET NO. 1 OF 1															
			SIZE B	MOLEX INCORPORATED																	
			THIS DRAWING CONTAINS INFORMATION THAT IS PROPRIETARY TO MOLEX INCORPORATED AND SHOULD NOT BE USED WITHOUT WRITTEN PERMISSION																		